

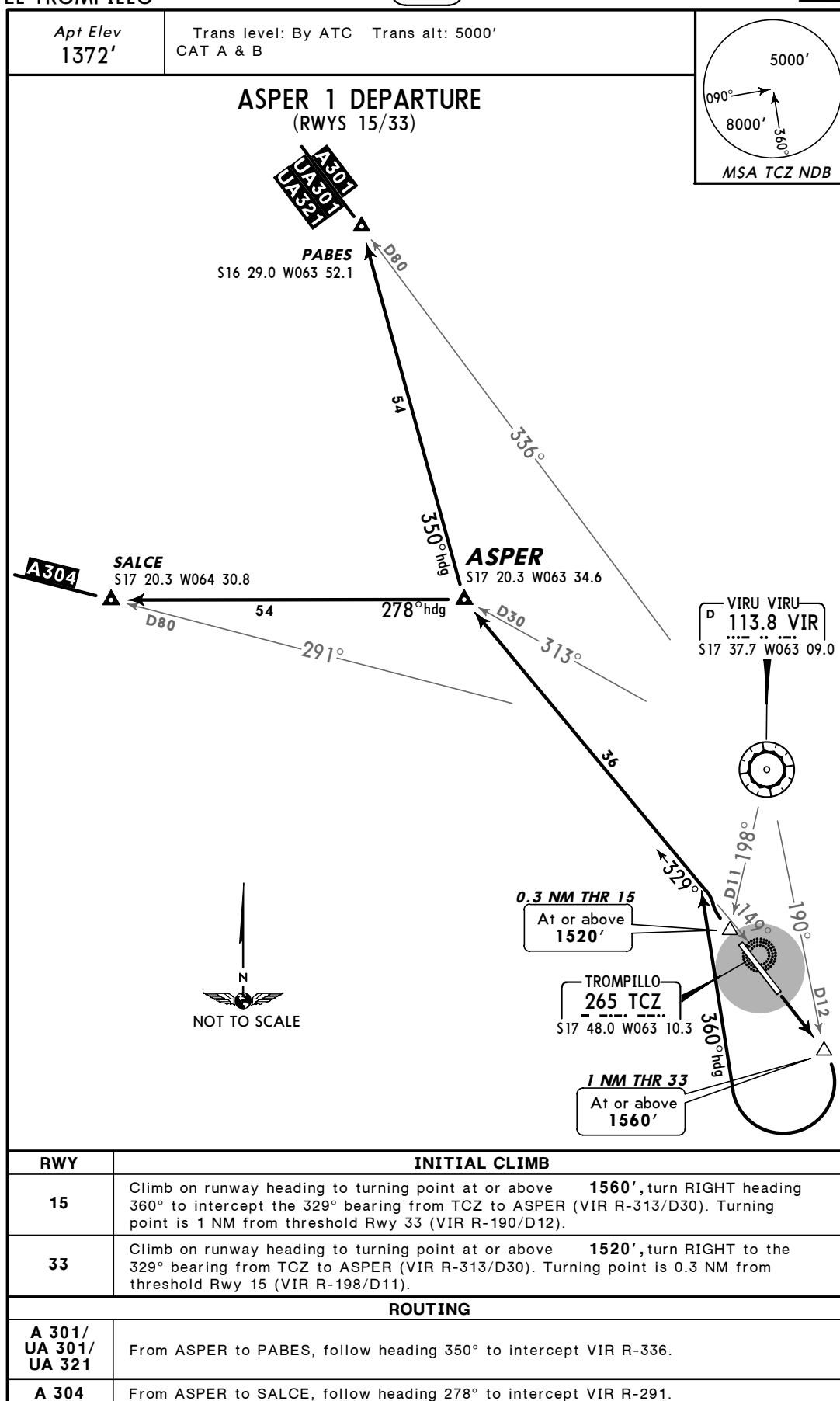
# PARA USO EN AVIACIÓN VIRTUAL ÚNICAMENTE

SLET/SRZ  
EL TROMPILLO

JEPPESEN  
5 DEC 03 10-3

SANTA CRUZ, BOLIVIA

SID



CHANGES: Procedure revised.

© JEPPESEN SANDERSON, INC., 2003. ALL RIGHTS RESERVED.

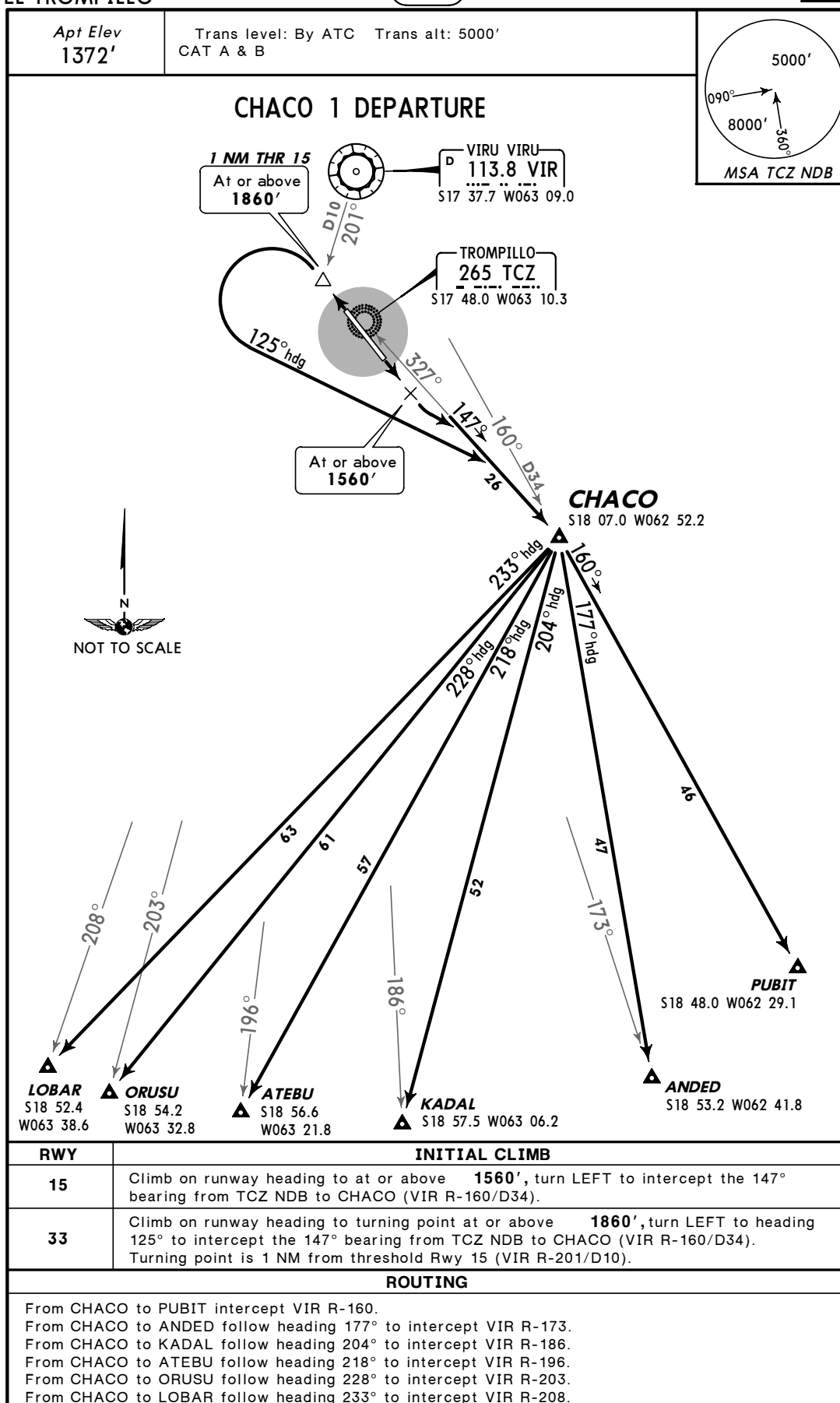
# PARA USO EN AVIACIÓN VIRTUAL ÚNICAMENTE

SLET/SRZ  
EL TROMPILLO

JEPPESEN  
5 DEC 03 (10-3A)

SANTA CRUZ, BOLIVIA

SID



CHANGES: See other side.

© JEPPESEN SANDERSON, INC., 2003. ALL RIGHTS RESERVED.

# PARA USO EN AVIACIÓN VIRTUAL ÚNICAMENTE

SLET/SRZ  
EL TROMPILLO

JEPPESEN  
30 JAN 04 10-3B

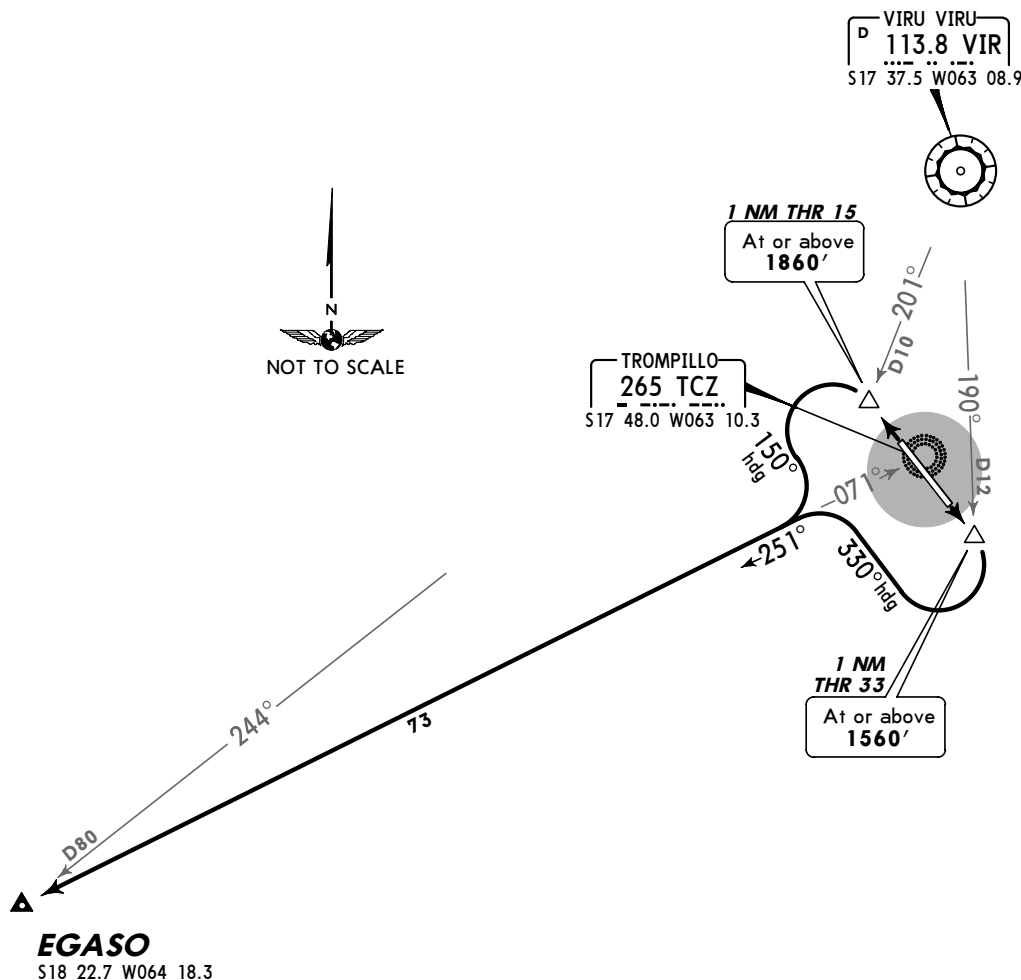
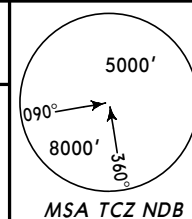
SANTA CRUZ, BOLIVIA

SID

Apt Elev  
1371'

Trans level: By ATC Trans alt: 5000'  
CAT A & B

## EGASO 2 DEPARTURE (RWYS 15/33)



**EGASO**  
S18 22.7 W064 18.3

TROMPILLO  
265 TCZ  
S17 48.0 W063 10.3

VIRU VIRU  
D 113.8 VIR  
S17 37.5 W063 08.9

1 NM THR 15  
At or above  
1860'

1 NM  
THR 33  
At or above  
1560'

RWY

### INITIAL CLIMB

15

Climb on runway heading to turning point at or above **1560'**, turn RIGHT to heading 330° to intercept the 251° bearing from TCZ to EGASO (VIR R-244/D80). Turning point is 1 NM from threshold Rwy 33 (VIR R-190/D12).

33

Climb on runway heading to turning point at or above **1860'**, turn LEFT to heading 150° to intercept the 251° bearing from TCZ to EGASO (VIR R-244/D80). Turning point is 1 NM from threshold Rwy 15 (VIR R-201/D10).

CHANGES: Procedure unnumbered, revised.

© JEPPESEN SANDERSON, INC., 2003, 2004. ALL RIGHTS RESERVED.

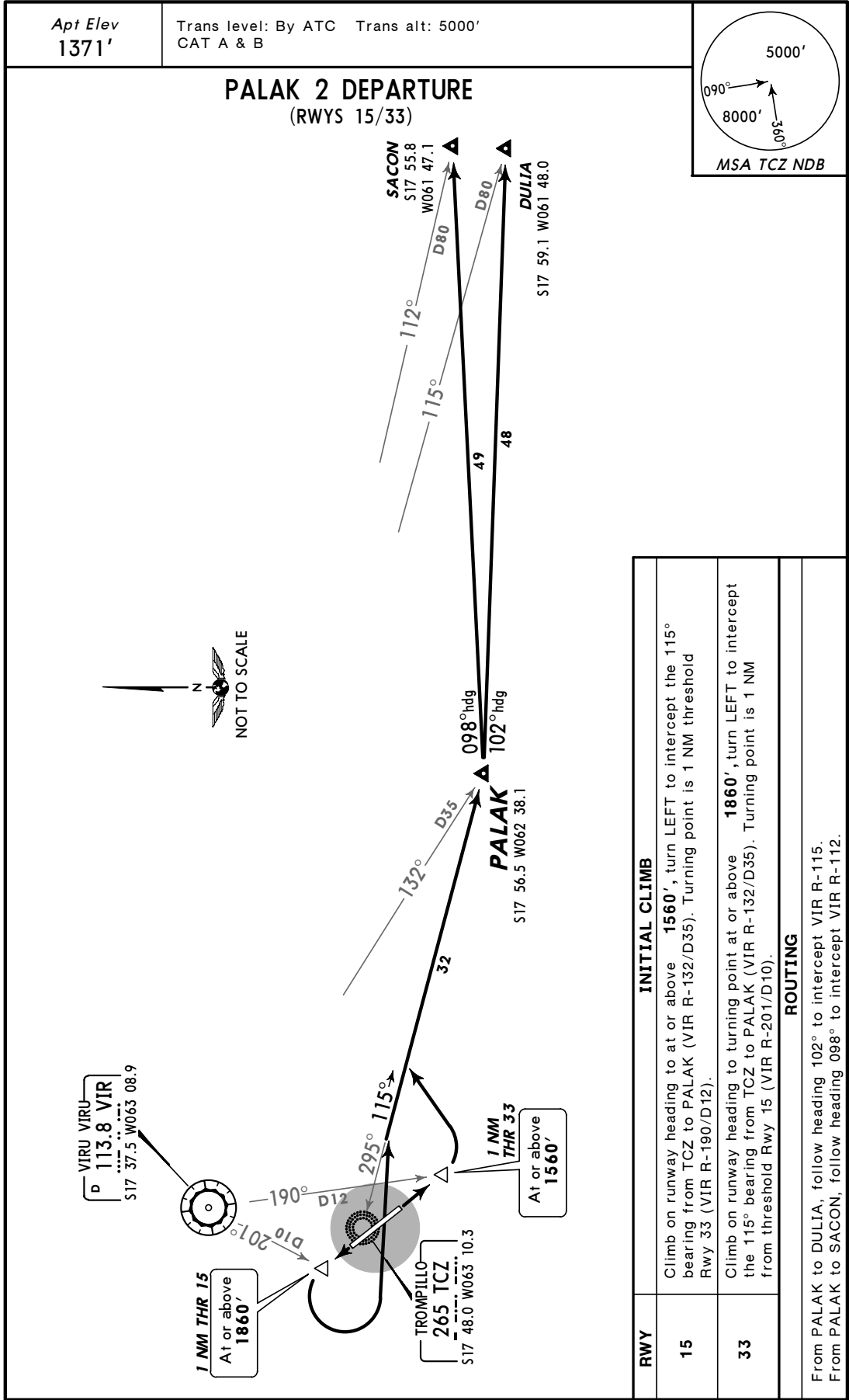
PARA USO EN AVIACIÓN VIRTUAL ÚNICAMENTE

SLET/SRZ  
EL TROMPILLO

JEPPesen  
30 JAN 04 10-3C

SANTA CRUZ, BOLIVIA

SID



CHANGES: Procedure upnumbered, revised.

© JEPPESEN SANDERSON, INC., 2003, 2004. ALL RIGHTS RESERVED.

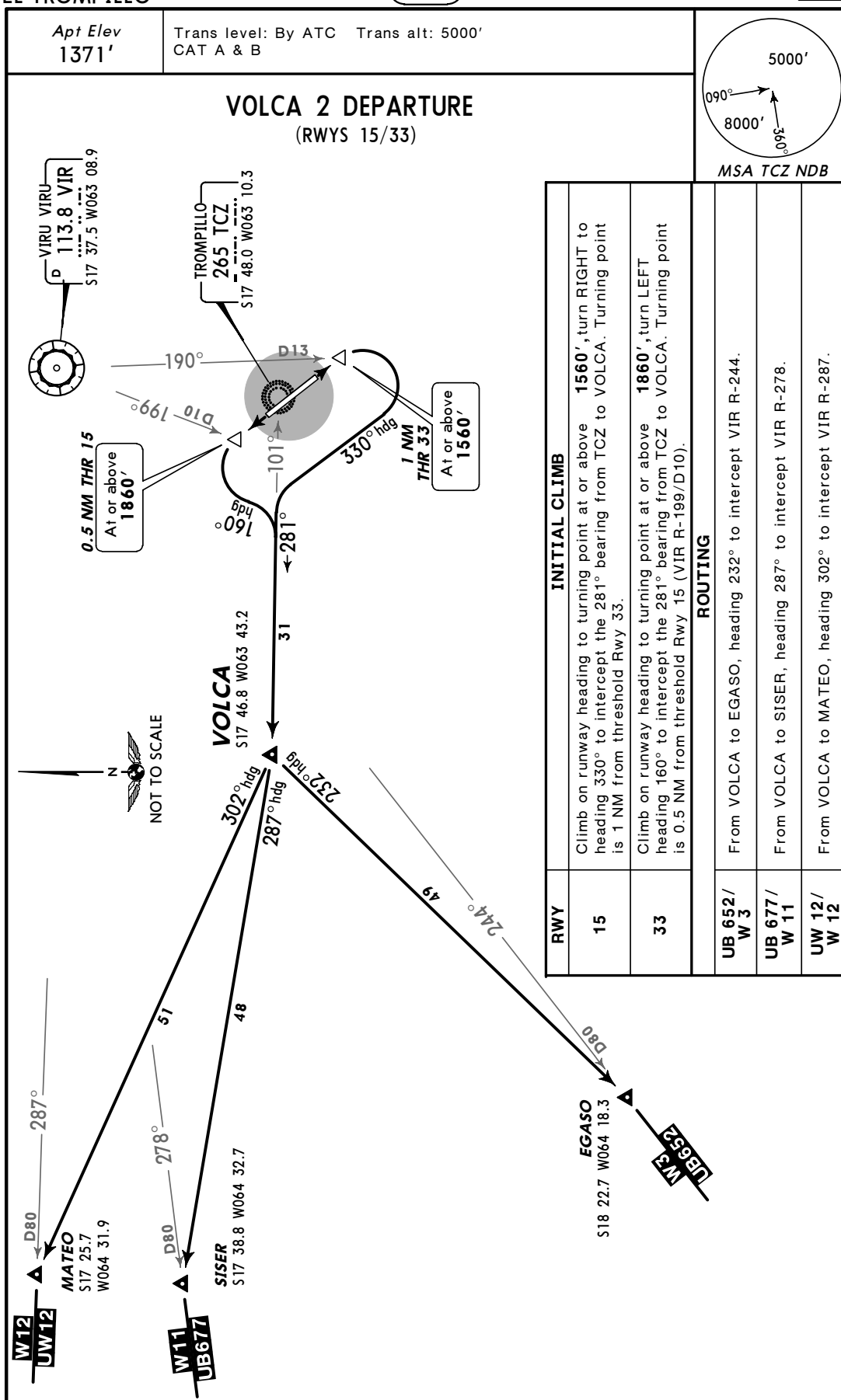
# PARA USO EN AVIACIÓN VIRTUAL ÚNICAMENTE

SLET/SRZ  
EL TROMPILLO

JEPPESSEN  
30 JAN 04 10-3D

SANTA CRUZ, BOLIVIA

SID

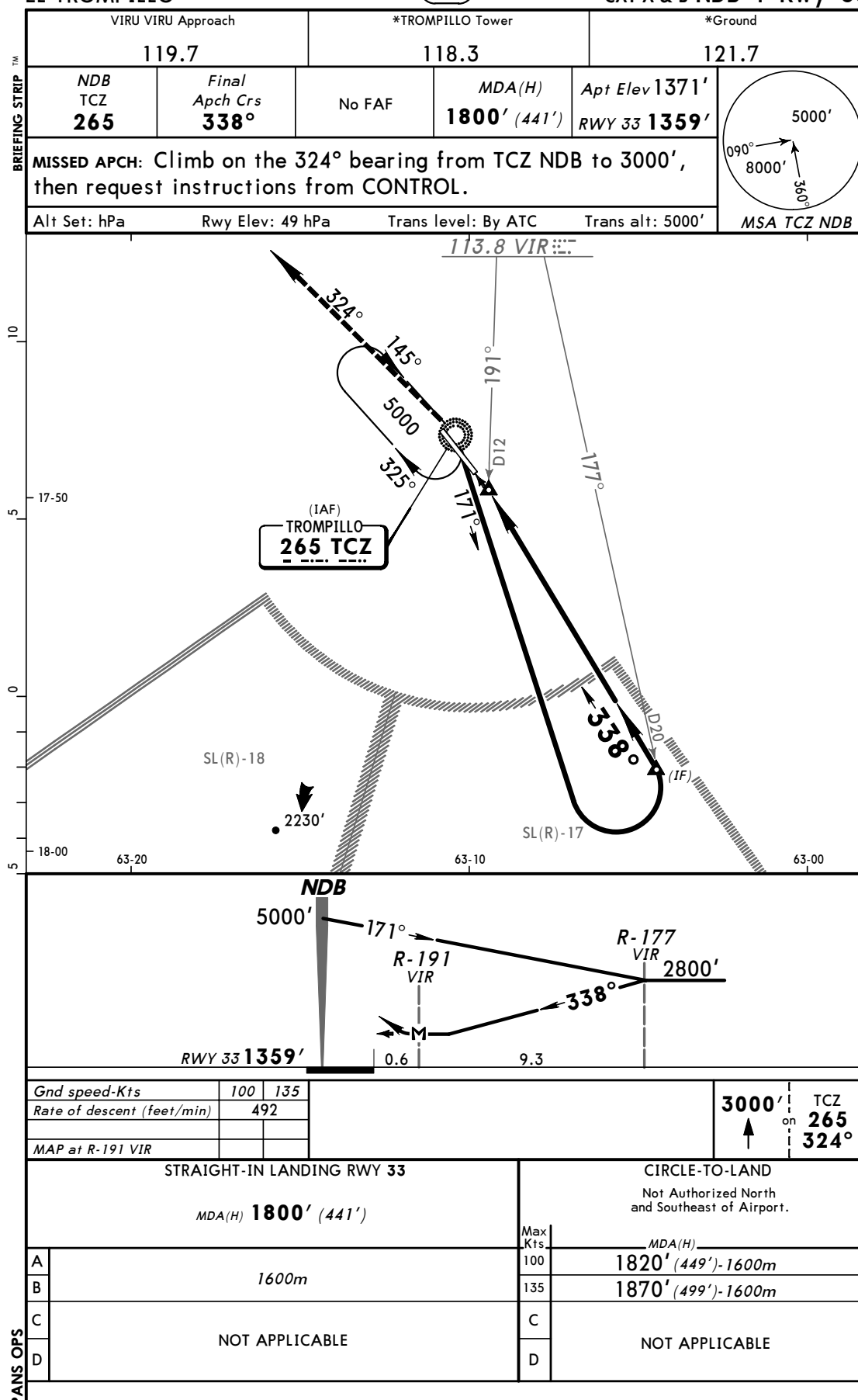


# PARA USO EN AVIACIÓN VIRTUAL ÚNICAMENTE

**SLET/SRZ**  
**EL TROMPILLO**

**JEPPESSEN**  
5 DEC 03 **(16-1)**

**SANTA CRUZ, BOLIVIA**  
**CAT A & B NDB-1 Rwy 33**



CHANGES: Procedure.

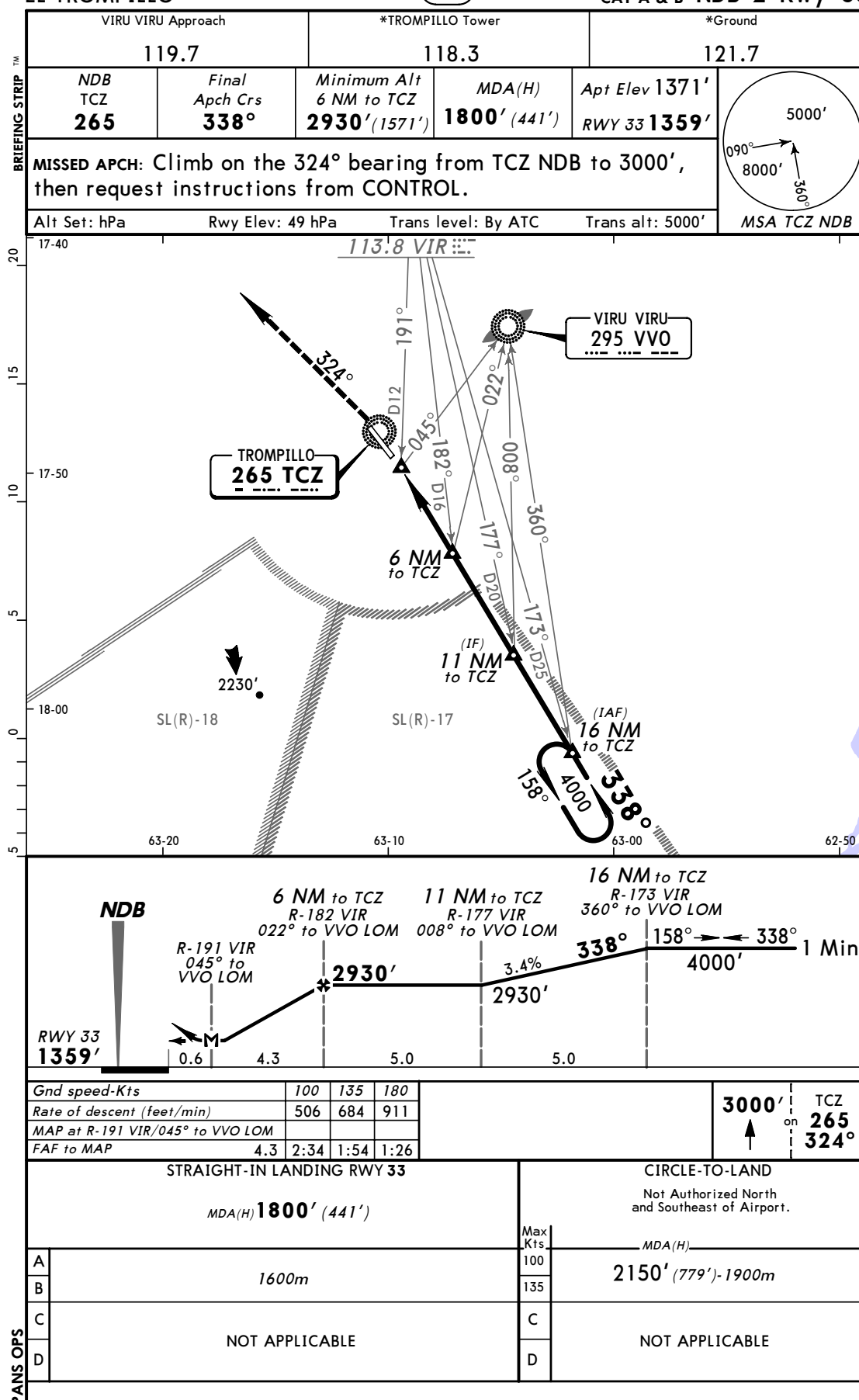
© JEPPESSEN SANDERSON, INC., 2003. ALL RIGHTS RESERVED.

# PARA USO EN AVIACIÓN VIRTUAL ÚNICAMENTE

SLET/SRZ  
EL TROMPILLO

JEPPESEN  
2 JAN 04 (16-2)

SANTA CRUZ, BOLIVIA  
CAT A & B NDB-2 Rwy 33



CHANGES: Reissue.

© JEPPESEN SANDERSON, INC., 2003, 2004. ALL RIGHTS RESERVED.

# PARA USO EN AVIACIÓN VIRTUAL ÚNICAMENTE

SLET/SRZ

Apt Elev 1371'

197.7°/10.4 From VIR 113.8

JEPPESEN

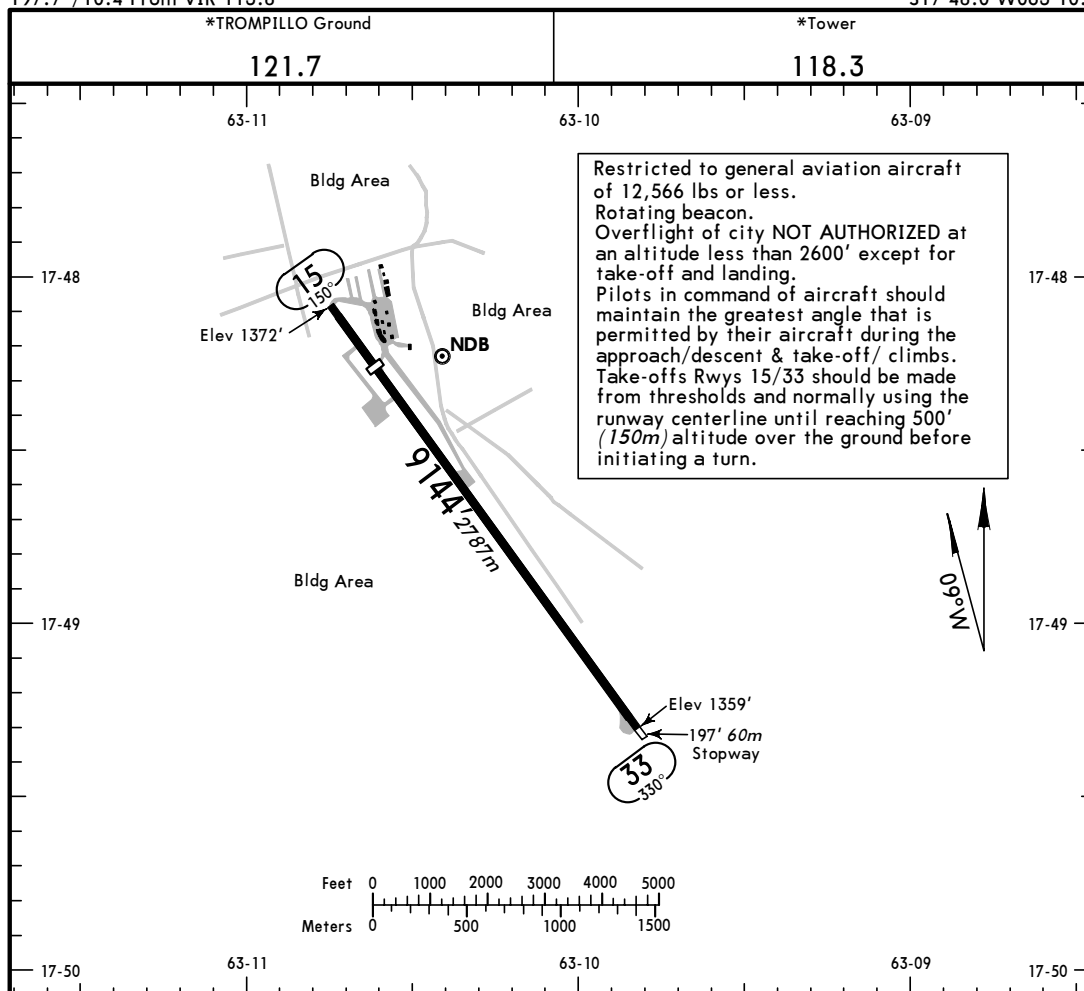
5 DEC 03

16-1

SANTA CRUZ, BOLIVIA

EL TROMPILLO

S17 48.0 W063 10.6



Restricted to general aviation aircraft of 12,566 lbs or less.  
Rotating beacon.  
Overflight of city NOT AUTHORIZED at an altitude less than 2600' except for take-off and landing.  
Pilots in command of aircraft should maintain the greatest angle that is permitted by their aircraft during the approach/descent & take-off/ climbs.  
Take-offs Rwys 15/33 should be made from thresholds and normally using the runway centerline until reaching 500' (150m) altitude over the ground before initiating a turn.

ADDITIONAL RUNWAY INFORMATION					
RWY			USABLE LENGTHS		WIDTH
			Threshold	Glide Slope	
15	RL		7864' 2397m		131'
33					40m
TAKE-OFF					
AIR CARRIER (JAA)					
LVP must be in Force All Rwys RCLM (DAY only) or RL			All Rwys RCLM (DAY only) or RL		
A					
B	250m		400m		
C					
D	300m				

CHANGES: See other side.

© JEPPESEN SANDERSON, INC., 2003. ALL RIGHTS RESERVED.